



New Road
Wootton, Northampton

oriordanbond
SALES & LETTINGS



GROUND FLOOR
567 sq. ft. (52.7 sq.m.) approx.



1ST FLOOR
567 sq. ft. (52.7 sq.m.) approx.



New Road

Wootton

NN4 6HD

GUIDE PRICE £300,000

This modern three bedroom semi-detached home is offered for sale in the popular village of Wootton, presented in good decorative order throughout, located close to local schools, shops and other amenities as well as the A45 and M1.

The accommodation comprises entrance hall, cloakroom/WC, kitchen/breakfast room and sitting/dining room with French doors to the low maintenance rear garden. To the first floor are three well proportioned bedrooms and a recently re-fitted shower room. Externally there are front and rear gardens with off road parking for two cars. Further benefits include gas radiator heating and uPVC double glazing. (A/1134/S)

Additional information

- Council Tax Band: C
- Energy Efficiency Rating: C

Viewing

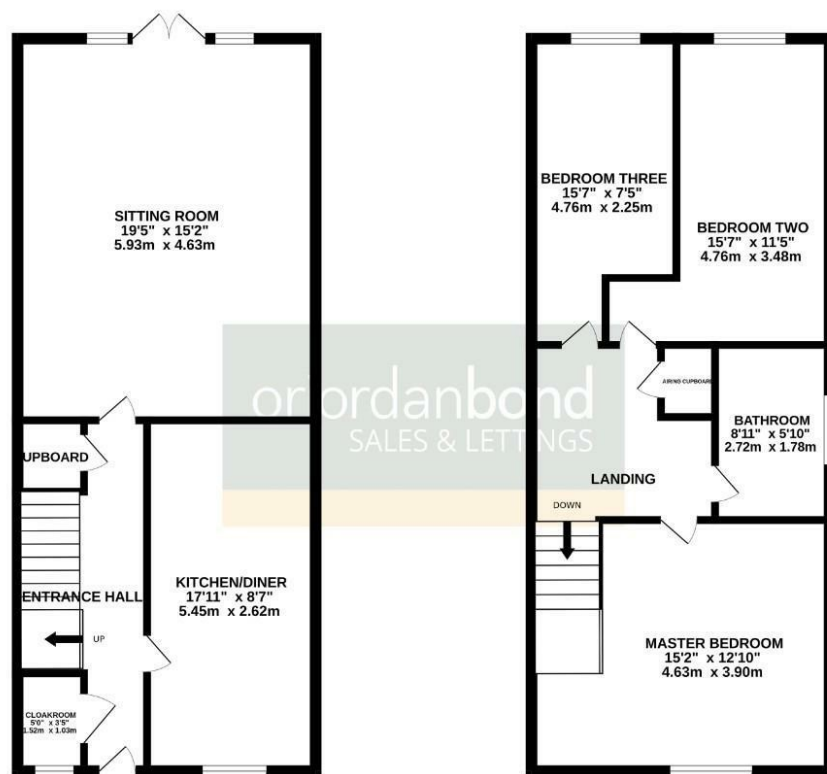
Viewing strictly by appointment – details below

Disclaimer

O'Riordan Bond Estate Agents Limited has not tested apparatus, equipment, fittings or services and so cannot verify they are in working order. The buyer is advised to obtain verification from their solicitor or surveyor.

O'Riordan Bond Grange Park Sales
01604 432007

grangepark@oriordanbond.co.uk



Whilst every attempt has been made to ensure the accuracy of the floorplan contained here, measurements of doors, windows, rooms and any other items are approximate and no responsibility is taken for any error, omission or misstatement. This plan is for illustrative purposes only and should be used as such by any prospective purchaser. The services, systems and appliances shown have not been tested and no guarantee as to their operability or efficiency can be given.
Made with NetLogo 6.2.0/25.

